

Edit

Graphical to look at and practical to work with, it allows the user to create personal and unique compositions and visual games like a piece of art.

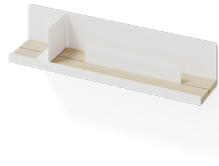
A groove running along the shelf with two partitions inserted helps to support items as well as creating little barriers between objects, books, frames, and other items.

The shelf can be described as a simple product with a twist, allowing a more dynamic approach to an otherwise static product. With time and personal touch, each Edit becomes spatial and can be modified by adding, moving, removing, and adjusting the items on it.

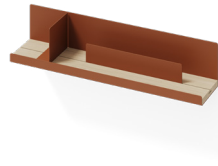
With Edit, alone or in a group, one can easily add a splash of color to the office or domestic environment. The combination of oak veneer and powder coated metal in a wide range of warm and earthy tones sends a strong message of modern interior design with a Nordic touch.

Design	Studio Nooi
Environment	Indoor
Material	The shelf consists of 8-30% recycled metal and is powder coated. The powder coating provides both environmental and quality benefits as no solvents need to be added and the amount of waste is minimum. The wood insert is made of oak veneered mdf board.
Paint/lacquer	Powder coated metal, clearcoated veneer.
Country of origin	Sweden
Preassembled	Partial assembly required, see assembly instructions.
Repairability	Partitions can be replaced, wood insert can be re-lacquered.

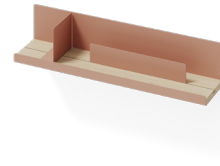
Standard colours



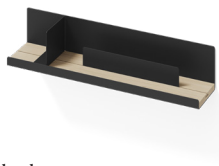
Signal White
RAL 9003



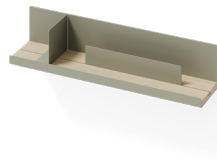
Copper Brown
RAL 8004



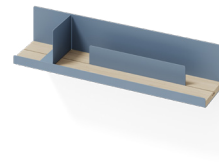
Terracotta
RAL 3012



Black
RAL 9005



Forest Green
RAL 7033

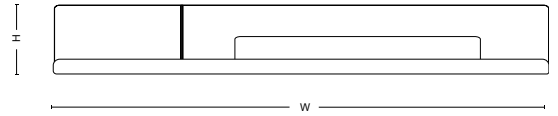


Dusty Blue
RAL 5014

Dimensions / Weight



Edit 6 Weight: 4 kg, 8.8 lbs
H: 120 mm, 4.72"
W: 600 mm, 23.6"
D: 125 mm, 4.92"



Edit 9 Weight: 8 kg, 17.6 lbs
H: 120 mm, 4.72"
W: 900 mm, 35.4"
D: 125 mm, 4.9"

Downloads

Visit mizetto.com for more information and digital library.

MIZETTO